

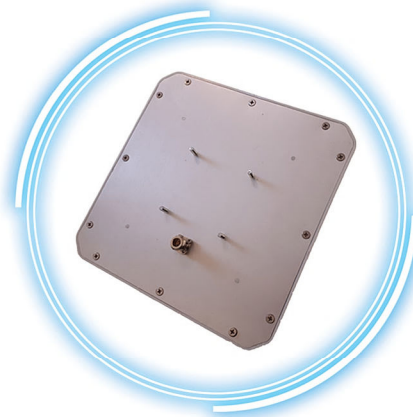


Circular Polarized UHF Fixed RFID Antenna

This single port UHF antenna is a circularly polarized panel antenna that provides reception and transmission of signals in the 865-875 MHz frequency. The Antenna offers maximum performance required in applications such as warehousing, parking systems, distribution, Manufacturing. It provides excellent VSWR and axial ratios to achieve the maximum performance for this type of antenna. The antenna is offered with female N-type connector and housed in a heavy duty radome with IP66 protection rating.

SH212010

UHF Fixed RFID Antenna



APPLICATIONS :

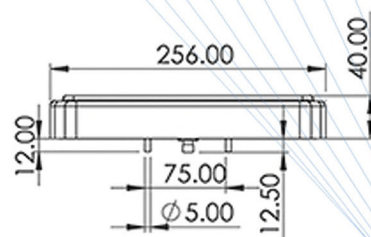
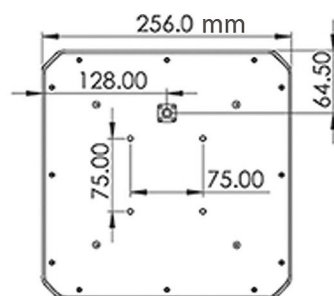
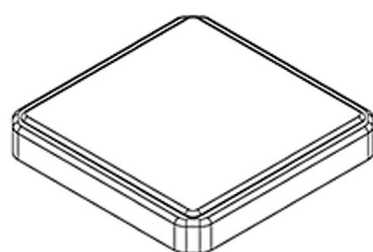
Warehouse

Inventory control

Asset tracking

Parking lot application

Conveyor belt



SPECIFICATIONS

Part Number	SH212010
-------------	----------

Physical

Size	255mm × 255mm × 40mm
Weight	900g
Housing Material	Aluminum + Engineering Plastic ASA
Protection Level	IP66

Performance

Frequency	865-875 MHz
Gain	8dBi
"H", "B" Angle	70°
Front to Back Ratio	≥ 20 dB
Polarization	RHCP, LHCP
Impedance	50(Ω)
Maximum VSWR	<1.3:1
Maximum Input Power	100W
Axial Ratio	1dB Typical
Antenna Connection	N-Type Female

Operational Environment

Working Temperature	-30 + 70°C
Storage Temperature	-40 + 85°C
Atmospheric Pressure	86kPa~108kPa
Relative Humidity	5%-95% RH no condensing